



Contents

Introduction

The Toolbar

Getting Started

A word about Rounding Errors

MJR Software

Product Support

Registration

What do you get

The Shareware Concept

Introduction

Overview

Convert for Windows is more than just another conversion utility. Convert will convert all of the most common and not so common Weights and Measures for you in just a few clicks. Convert also provides a Calculators Menu where you can perform calculations for Triangle Area and Ohm's Law. Convert also gives easy access to the Windows Calculator from anywhere within the program.

System Requirements

To run Convert, you must have Microsoft Windows 3.1, the WinHelp that was included with Windows 3.0 will not support the help file for Convert.

Convert will run on a 286AT, but a 386SX/DX or 486SX/DX is highly recommended for the program to run at it's optimum potential.

A VGA or SVGA is also recommended.

Although Convert can be used without a mouse, the program was optimally written to be used with a mouse.

At least 2.9 MB of hard drive space and at least 4 Meg of RAM is required to run Convert but, you may get an out of memory message from time to time, if this happens, try running Convert again, Windows should re-allocate memory for you. 8 Meg or more of RAM is optimum for the Convert program. If you should run into any problems, see [Product Support](#).

Trademarks

Convert is a Trademark of MJR Software

Windows is a Trademark of Microsoft Corporation

Getting Started

NOTE : The term "**Click**" or "**Click-on**" refers to pointing the mouse icon, (usually an arrow), to a spot and pressing the left Mouse Button.

Menu Commands

[Print](#)

[Exit](#)

Conversions

[Temperature](#)

[Distance](#)

[Velocity](#)

[Weights](#)

[Liquids](#)

[Area](#)

[Dry Measure](#)

[Volume](#)

Calculators

[Triangle Area](#)

[Ohms Law](#)

[Win Calculator](#)

See Also...

[The Toolbar](#)

[Glossary](#)

[Keyboard](#)

The Toolbar

Conversions



Calculators



Program Control



See also...

Glossary
Getting Started

Product Support

Through Compuserve

Please direct questions to:
Michael Robertson
CIS ID# 71024, 1562

The Internet

Send EMail to:
mjrsoft@ix.netcom.com

Voice Telephone

(714) 858-1843

Leave name & number and a brief description of the problem. Someone will get in touch with you as soon as possible.

Registration

On CompuServe

GO SWREG Product Number 1829.

By snail mail (CHECK OR MONEY ORDER ONLY)

Check appropriate blank below and allow 4-6 weeks delivery.

_____ Please register my copy of Convert, I am sending a check or money order for the amount of \$10.00.

_____ Please register my copy of Convert. I am sending a check or money order for the amount of \$13.00 to cover the cost of a copy of Convert on a 3½" disk.

Sign:

Name:

Company:

Address:

City:

State:

Zip/Post Code:

Country: _

E-Mail Address:

Please make check or money order payable to :

MJR Software

Please send to:

MJR Software

22 Buckthorn

Rancho Santa Margarita ,CA, 92688

What do you get

Latest software

If you send for the 3½" disk, you will get a copy of the latest version of Convert,

Since an extensive On-line Help File is included with Convert, a printed manual will not be provided.

Product support

Free customer support - no time limit.

Through Compuserve: CIS ID# 71024,1562.

The Internet: mjrsoft@ix.netcom.com

Voice Telephone, (714) 858-1843, Leave name & number, and a customer representative will contact you as soon as possible.

Nag Screens

Those bothersome **Nag Screens** will be eliminated.

New releases

Notification of new releases.

Later upgrades offered at reduced prices.

Extra - Extra !

When you register, let us know if there are any conversions you would like to see incorporated into the Convert program, and we will do our best to provide them for you at **no extra charge**. This service will be provided to reasonable requests only.

Conversions

US Standard		Apothecary	
Barrels, Oil	<input type="text"/>	Fluid Ounces	<input type="text"/>
Gallons, Imperial	<input type="text"/>	Fluid Drams	<input type="text"/>
Gallons, US	<input type="text"/>	Minims	<input type="text"/>
Quarts	<input type="text"/>	SI Metric	
Pints	<input type="text"/>	Liters	<input type="text"/>
Gills	<input type="text"/>	Milliliters	<input type="text"/>

EXIT CLEAR OK

Above is a typical Display Form. Click-on a control or area to obtain information.

If you have a Mouse

1. Click-on the Text Box of your choice.
2. Type in a NUMERICAL value.
3. Click-on the OK Button or press the Enter key. Convert is done!

If you don't have a Mouse

1. Use the TAB key and Tab down to the Text Box of your choice.
2. Type in a NUMERICAL value.
3. Press the Enter key. Convert is done!

NOTE: At this time, if you wish to clear all the Text Boxes, then Click-on the CLEAR Button. Non-Mouse users will have to Tab to the CLEAR Button and press the Enter key.

To Exit and return to the title Display Form, Click-on the Exit Button or select Exit from the Options menu. Non-Mouse users may Tab to the EXIT Button or press Ctrl-E to Exit.

You can also Print a hardcopy of the conversion or calculation by selecting Print from the Options menu. Non-Mouse users can press Ctrl-P to Print.

See also...

Glossary
Getting Started

Glossary

Calculator

Clear Button

Control Button

Display Form

Exit Button

Formula (Triangle Area)

Help

Input Boxes

Labels (Triangle Area)

Minimum & Maximum Buttons

OK Button

Options

Print

Results (Triangle Area)

Scroll Bars

Selected (Triangle Area)

Text Box

Toolbar

Ohms Law Calculator

Overview

The Ohms Law Calculator is a basic Display Form that is used to calculate simple equations for electricity and electronics. It is beyond the scope of this program to include more complex equations such as parallel resistance, parallel capacitance, resonant tank circuits, frequency and impedance, etc.

If you have a Mouse

1. Click-on a Text Box of your choice.
2. Type in a numerical value.
3. Click-on a second Text Box.
4. Type in the appropriate numerical value.

NOTE: You must have entered TWO values in two separate Text Boxes before performing the next step or an error will result.

5. Click-on the OK Button or press the Enter key. Convert is done!

If you don't have a Mouse

1. Use the TAB key and Tab down to the Text Box of your choice.
2. Type in a NUMERICAL value.
3. Tab down to a second Text Box.
4. Type in the appropriate NUMERICAL value.

NOTE: You must have entered TWO values in two separate Text Boxes before performing the next step or an error will result.

5. Press the Enter key. Convert is done!

NOTE: At this time, if you wish to clear all the Text Boxes, then Click-on the CLEAR Button. Non-Mouse users will have to Tab to the CLEAR Button and press the Enter key.

To Exit and return to the title Display Form, Click-on the Exit Button or select Exit from the Options menu. Non-Mouse users may Tab to the EXIT Button or press Ctrl-E to Exit.

You can also Print a hard copy of the conversion or calculation by selecting Print from the Options menu. Non-Mouse users can press Ctrl-P to Print.

See also...

Getting Started

Conversions

Glossary

Triangle Area

Triangle Area

Options WinCalculator Help

Active Formula

Base and Height

2 Sides, 1 Angle

2 Angles, 1 Side

3 Sides

Select from above based upon which variables you already know, then press the enter key, or click on OK.

Side One 23

Side Two 43

Angle 30

Total Area 247.2498

EXIT CLEAR OK

Click-on a control or section of the above Display Form for information on it's function.

Overview

This Display Form will calculate the area of a triangle using one of three selected Formulas. This Calculator was included to augment the Area Conversion.

If you have a Mouse

1. Click-on a Formula of your choice.
2. Click-on the OK Button or press the Enter key.
3. Follow the instructions in the Input Boxes that appear.
4. After entering the last value, Convert will automatically perform the calculation.

If you don't have a Mouse

1. Use the TAB key and Tab down to the Formula of your choice.
2. Press the Enter key and follow the instructions in the Input Boxes

NOTE: You will press the Enter key after each data entry. This has the same effect as the OK Button.

NOTE: At this time, if you wish to clear all the Text Boxes, then Click-on the CLEAR Button. Non-Mouse users will have to Tab to the CLEAR Button and press the

Enter key.

To Exit and return to the title Display Form, Click-on the Exit Button or select Exit from the Options menu. Non-Mouse users may Tab to the EXIT Button or press Ctrl-E to Exit.

You can also Print a hard copy of the conversion or calculation by selecting Print from the Options menu. Non-Mouse users can press Ctrl-P to Print.

See Also...

Getting Started

Conversions

Glossary

Keyboard

Menu Commands

Main Title Display Form

Alt-O	<u>Options Menu</u>
Alt-C	<u>Conversions Menu</u>
Alt-A	Calculators Menu
Alt-H	Help Menu

To make a menu selection, use up & down arrow keys to select then press Enter key.

Ctrl-E	Exit Program
--------	--------------

Conversions & Calculators Display Forms

Alt-O	<u>Options Menu</u>
Alt-C	Access <u>Windows Calculator</u>
Alt-H	Access Help

Ctrl-P	<u>Print</u> Hard copy of Calculation/Conversion
Ctrl-E	Exit <u>Display Form</u> and return to Main Title <u>Display Form</u>

Mouse Commands

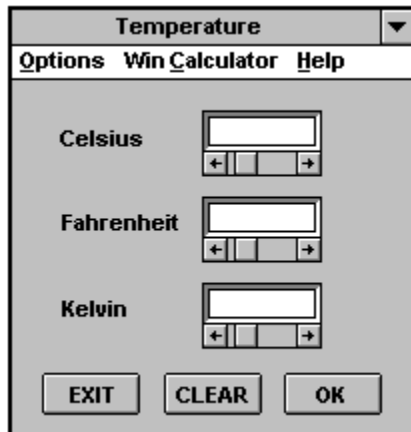
Click or **Click-on** refers to pointing the Mouse cursor to an item and pressing the left Mouse button.

Use the Mouse to select items from the Menus and select the Controls on the various Display Forms.

See Also...

Glossary
Getting Started
Conversions
Triangle Area
Ohms Law Calculator

Temperature



Click-on a control or area above for more information.

Overview

This Display Form will convert for you, Temperature in Celsius, Fahrenheit and Kelvin.

If you have a Mouse

1. Click-on the Text Box of your choice.
2. Type in a NUMERICAL value.
3. Click-on the OK Button or press the Enter key. Convert is done!

Alternate method

1. Point the Mouse cursor to a left or right arrow button on a Scroll Bar corresponding to the Text Box that you wish to change in value.
2. Click-on this button until the required value is reached.
3. Click-on the OK Button or press the Enter key. Convert is done!

If you don't have a Mouse

1. Use the TAB key and Tab down to the Text Box of your choice.
2. Type in a NUMERICAL value.
3. Press the Enter key. Convert is done!

Alternate method

1. Use the TAB key and Tab down to a Scroll Bar corresponding to the Text Box that you wish to change in value.
2. Use the left & right arrow keys to change the value in the Text Box.
3. Press the Enter key. Convert is done!

NOTE: At this time, if you wish to clear all the Text Boxes, then Click-on the CLEAR Button. Non-Mouse users will have to Tab to the CLEAR Button and press the Enter key.

To Exit and return to the title Display Form, Click-on the Exit Button or select Exit from the Options menu. Non-Mouse users may Tab to the EXIT Button or press Ctrl-E to Exit.

You can also Print a hard copy of the conversion or calculation by selecting Print from the Options menu. Non-Mouse users can press Ctrl-P to Print.

See Also...

Getting Started

Glossary

Keyboard

Conversions

Rounding Errors

A word about Rounding Errors

You will probably notice a few errors while working some of the Conversions. These errors will show up when you re-enter some resulting value, for example; say that you are working within the Area Conversion. You have entered into the Acres Text Box a value of 6400.641 and clicked-on the OK button or pressed the Enter key. The resulting values for Roods is 25602.564 and for Square Kilometers is 25.902619949495. Now if you were to place your cursor on the Text Box for Square Kilometers and clicked-on the OK button or pressed the Enter key, then you will probably get somewhat different results. For Acres, 6400.64100000001, and for Roods, 25602.5640000001. As you can see, the resulting values are very close to within at least six decimal places.

The reason for this is due to the way the computer calculates these numbers. We calculate numbers using the Decimal system which is based on the number 10. The computer does all it's operations using the Binary system. In the number 1111.1111, beginning from the decimal point and going toward the left, the place values represent 1, 2, 4 & 8 respectfully. From the decimal point going toward the right the place values represent $1/2$, $1/4$, $1/8$ & $1/16$. As you can see, Decimal numbers can not be properly represented in the Binary system.

So, if you were to keep reentering the value for Square Kilometers, the error would become worse with each calculation. This is also due to the limitations of the computer to represent no more than 15 total digits.

I have written this program using the highest precision possible. At least, this way, you can decide what precision you need for your calculations and use whatever portion of the resulting numbers at your own discretion. I can not however guarantee the accuracy of these conversions beyond two decimal places.

The Shareware Concept

Shareware is copyrighted software that is distributed by authors through bulletin boards, on-line services and disk vendors.

Shareware allows you to try the software for a reasonable limited period. If you decide not to continue using it, you throw it away, (remove it from your hard drive, etc.), and forget about it. You only pay for it if you continue to use it. Shareware is a distribution method, not a type of software. You benefit because you get to use the software to determine whether it meets your needs, before you pay for it.

The shareware system and the continued availability of quality shareware products depend on your willingness to register and pay for the shareware you use. It's the registration fees you pay which allow authors to support and continue to develop our products. Please show your support for shareware by registering those programs you actually use.

Print - Print the results of a conversion or calculation to a printer.

Exit - Exits the present screen, or if at the title screen, will exit the program.

Temperature - Conversions in Celsius, Fahrenheit and Kelvin.

Distance - Conversions in distances and lengths from microns to miles.

Velocity - Conversions from millimeters per second to miles per hour.

Weights - Conversions in weight from milligrams to Tons.

Liquids - Conversions for liquids from milliliters to Barrels of oil.

Area - Conversions from square millimeters to square miles. Use the Triangle Area selection in the Calculators menu to determine a triangle's area then return to the Area Conversion with your value.

Dry Measure - Conversions for measures in pecks, bushels, cups, and other units of dry measure.

Volume - Conversions in cubic volume from cubic millimeters to cubic meters to cubic yards, etc.

Win Calculator - This selection invokes the Windows Calculator. Refer to the help file of the calculator for operation.

Clear Button - Clears out the data that is displayed in the Text Boxes. All data will be lost.

Control Button - This is the standard Windows control button that includes the commands for Minimize, Maximize, Close, Move, etc.

Display Form - The various windows displayed in this program. Example: The startup window containing the Convert, Windows & MJR Software logos is a Display Form.

Formula - In Triangle Area, choose one of the four selections depending upon which values you already know. Example: If you already have the values for two of the Angles and one of the Sides of the triangle then select '2 Angles, 1 Side' then Click-on the OK button or press the Enter key and follow the instructions in the following Input Boxes.

Help - Access Help.

Input Boxes - These are special message windows that allow easy entry of values. They are used in the Triangle Area and Ohms Law Calculators for the entry of multiple values.

OK Button - Performs the same function as the Enter key. Will cause the program to proceed with the calculation or conversion.

Options - Menu command that provides access to the Print and Exit commands.

Text Box -



The recessed boxes that you will be typing in the NUMERICAL values to be converted or calculated.

Minimum & Maximum Buttons - The down arrow will cause the Display Form to minimize,(become an icon at the bottom of your screen), the up arrow will cause the Display Form to Maximize, (fill the entire screen). Not all display forms have the ability to be maximized.

Scroll Bars - Use these with the Mouse to increment & decrement the values seen in the text boxes. The non-Mouse user can Tab down to the appropriate Scroll Bar and use the arrow keys to change the values in the text boxes.

Min Button - This Button will minimize the Display Form to an icon.

Selected - Point your mouse at one of these and click the left button to select a formula based upon the variables you already know. Non-mouse users will TAB down to the proper selection and press the Enter key to select.

Labels - These will appear after all of the needed variables have been entered.

Results - These echo the input variables and show the total.

Ohms_Law - Perform calculations using Ohms Law.

Triangle Perform calculations for Triangle Area.

Toolbar - These are the buttons that take you throughout the program. Use the Tool Bar instead of the menus for your convenience.

